

PHIFER

EXTERIOR SUN CONTROL
FABRIC

SUNTEX® 80/90

WEAVING
EXCELLENCE
WITH
INNOVATION



SunTex® 80/90

BY PHIFER

SOLAR OPTICAL PROPERTIES					SHGC/G VALUE g-tot (glass & blind)					
					SINGLE			INSULATING		
Color	TS	RS	AS	TV	1/8 CL	1/4 CL	1/4 HA	1/2 CL	1 CL	1 HA
SUNTEX® 80 Zero Degree Profile Angle • Fabrics Installed Externally										
Brown	28	4	68	37	0.32	0.32	0.30	0.28	0.28	0.23
Black	28	4	68	37	0.32	0.32	0.30	0.28	0.28	0.23
Grey	28	23	49	36	0.30	0.30	0.28	0.26	0.25	0.22
Stucco	31	38	31	36	0.31	0.30	0.29	0.27	0.26	0.23
Beige	32	30	38	39	0.33	0.32	0.30	0.29	0.27	0.23
Dark Bronze	28	5	67	38	0.32	0.31	0.30	0.28	0.26	0.23
SUNTEX® 80 30 Degree Profile Angle • Fabrics Installed Externally										
Brown	26	4	70	37	0.30	0.30	0.28	0.26	0.25	0.22
Black	26	4	70	37	0.30	0.30	0.28	0.26	0.25	0.22
Grey	26	23	51	36	0.29	0.28	0.26	0.24	0.23	0.21
Stucco	30	38	32	36	0.30	0.30	0.28	0.26	0.25	0.22
Beige	31	30	39	39	0.32	0.31	0.30	0.28	0.27	0.23
Dark Bronze	26	5	69	38	0.30	0.30	0.28	0.26	0.25	0.22
SUNTEX® 90 Zero Degree Profile Angle • Fabrics Installed Externally										
Brown	13	5	82	18	0.20	0.20	0.19	0.17	0.16	0.15
Black	14	4	82	19	0.21	0.21	0.20	0.17	0.17	0.15
Grey	14	27	59	18	0.18	0.18	0.17	0.16	0.15	0.13
Stucco	18	44	38	20	0.20	0.20	0.18	0.17	0.17	0.15
Beige	17	36	47	20	0.20	0.20	0.18	0.17	0.17	0.15
Dark Bronze	13	5	82	18	0.20	0.20	0.19	0.17	0.16	0.15
SUNTEX® 90 30 Degree Profile Angle • Fabrics Installed Externally										
Brown	12	5	83	18	0.19	0.19	0.18	0.16	0.15	0.14
Black	12	4	84	19	0.19	0.19	0.18	0.16	0.15	0.14
Grey	13	27	60	18	0.17	0.17	0.16	0.15	0.14	0.13
Stucco	17	44	39	20	0.19	0.19	0.17	0.16	0.16	0.14
Beige	16	36	48	20	0.19	0.19	0.18	0.16	0.16	0.14
Dark Bronze	12	5	83	18	0.19	0.19	0.18	0.16	0.15	0.14



PROTECTION THAT LIVES ON
MICROBAN®
 Microban® antimicrobial protection inhibits the growth of stain-causing bacteria, mold and mildew on the shade.



TS = Solar Transmittance
 RS = Solar Reflectance
 AS = Solar Absorptance
 TV = Visual Transmittance

SHGC = Solar Heat Gain Coefficient

1/8 CL = 1/8" Clear Glass
 1/4 CL = 1/4" Clear Glass
 1/4 HA = 1/4" Heat Absorbing Glass
 1/2 CL = 1/2" Insulating Clear Glass
 1 CL = 1" Insulating Clear Glass
 1 HA = 1" Insulating Heat Absorbing Glass

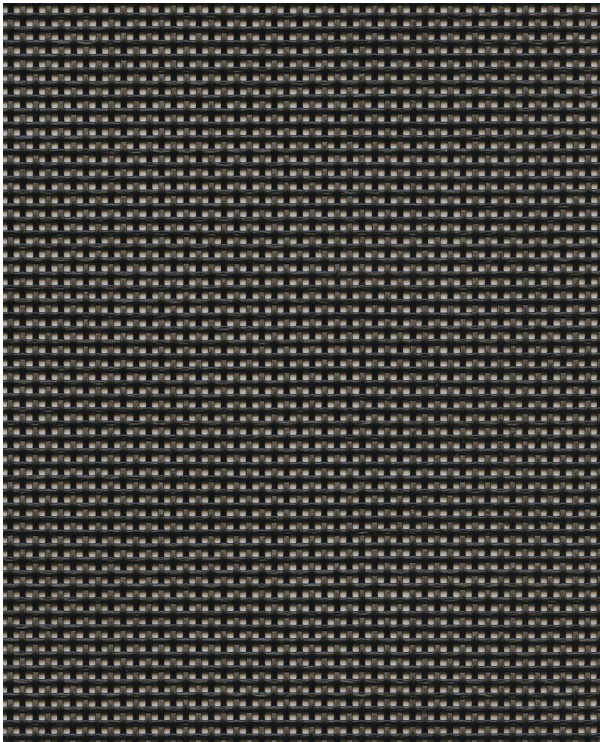
The solar optical properties are used to calculate the solar heat gain coefficient (SHGC). The SHGC represents the percentage of solar heat gain that is transmitted to the interior through the glass and shading system. Dark colors provide maximum glare reduction and visibility.

For additional performance values, test references and technical definitions visit us at phifer.com.

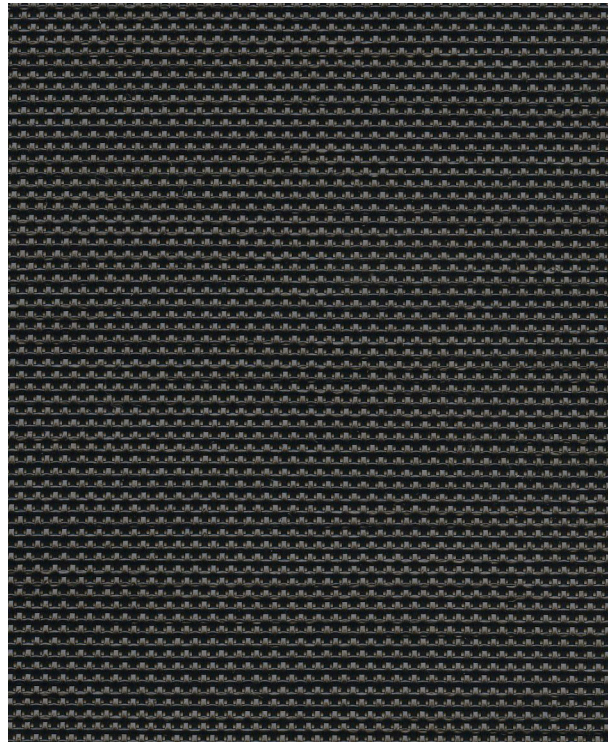
SUNTEX 80

SUNTEX 90

Black

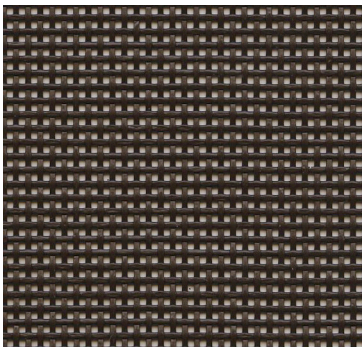


Black

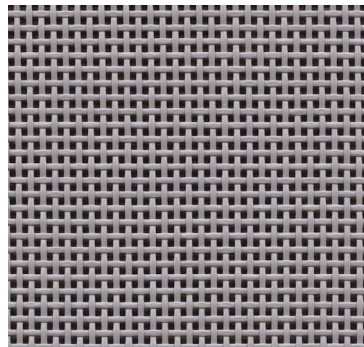


SUNTEX 80 and SUNTEX 90 are also available in the colors shown below.

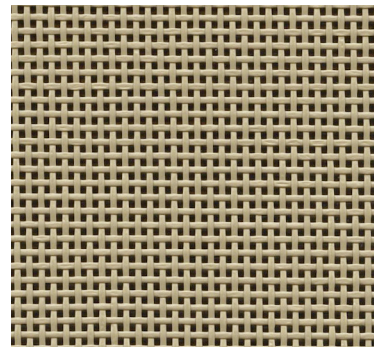
Brown



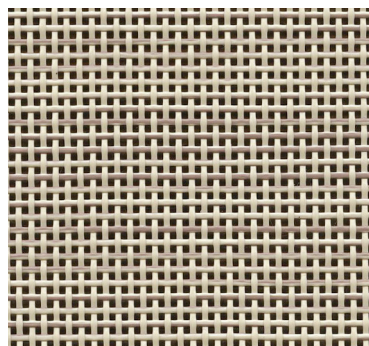
Grey



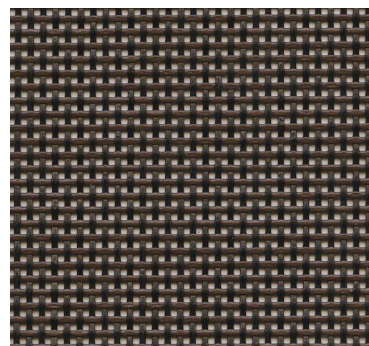
Beige



Stucco



Dark Bronze



SUNTEX® 80/90 SPECIFICATIONS

SunTex exterior shading fabric is made of strong vinyl-coated polyester. Developed originally for use in outdoor furniture, SunTex is mildew and fade resistant and needs only an occasional cleaning with mild soap and water. Ideal for use as a shading fabric on windows, doors and porches, SunTex is also pet resistant.

FIRE CLASSIFICATION	California Technical Bulletin 117 NFPA 101 (Class A Rating)	IBC Section 803.1.1 (Class A Rating)
BACTERIA AND FUNGAL RESISTANCE	ASTM E 2180 Includes Microban antimicrobial additives	ASTM G21
ENVIRONMENTAL CERTIFICATION	GREENGUARD Certified to these standards for low chemical emissions into indoor air during product usage	GREENGUARD Gold
SAFE USE	RoHS Compliant ANSI/WCMA A 100.1-2007 for lead content US Consumer Product Safety Commission Section 101 REACH Compliant	
WARRANTY	10-year exterior	
UV PROTECTION	SunTex exterior shading fabrics are an effective way to reduce harmful UV rays. Phifer Incorporated is a proud member of the Skin Cancer Foundation's Corporate Council.	

SUNTEX®	80	90
WIDTHS	36", 48", 60", 72" and 96"; <i>120" available in Black, Brown, Dark Bronze and Stucco</i> 91.4 cm, 121.9 cm, 152.4 cm, 182.9 cm and 243.8 cm; <i>304.8 cm available in Black, Brown, Dark Bronze and Stucco</i>	36", 48", 60", 72" and 96"; <i>120" in all colors except Grey</i> 91.4 cm, 121.9 cm, 152.4 cm, 182.9 cm and 243.8 cm; <i>304.8 cm in all colors except Grey</i>
ROLL LENGTH	100 Linear Feet (30.48m); 120" (304.8cm) in 90 Linear Feet (27.43m)	100 Linear Feet (30.48m); 120" (304.8cm) in 90 Linear Feet (27.43m)
COMPOSITION	31% Polyester 69% Vinyl on Polyester	31% Polyester 69% Vinyl on Polyester
MESH WEIGHT	12.9 oz/yd ² 437.38 g/m ²	16.5 oz/yd ² 559.44 g/m ²
FABRIC THICKNESS	0.032 in 0.813 mm	0.035 in 0.889 mm
OPENNESS FACTOR	Approximately 25%	Approximately 10%
UV BLOCKAGE	Approximately 75%	Approximately 90%
BREAKING STRENGTH (LBS)	269 Warp, 237 Fill	378 Warp, 276 Fill
STIFFNESS (MG)	445 Warp, 397 Fill	424 Warp, 450 Fill



P. O. Box 1700 • Tuscaloosa, Alabama 35403-1700 USA
 Phone: 205.345.2120 • FAX: 205.391.0799
 Toll Free USA/Canada: 1.800.221.5497
 phifer.com • ISO Registered



© SunTex is a registered trademark of PHIFER INCORPORATED.
 © MICROBAN is a registered trademark of Microban Products Company.
 ™ UL, the UL logos and the UL mark are trademarks of UL LLC.
 © PHIFER INCORPORATED V23 3009031